

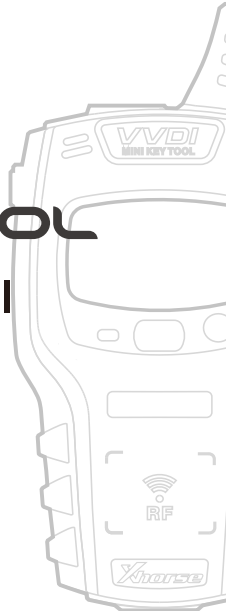


# MINI KEYTOOL

## User Manual

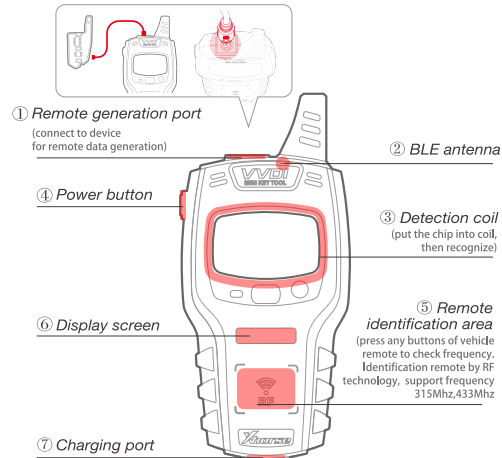


Scan QR Code to download Xhorse APP

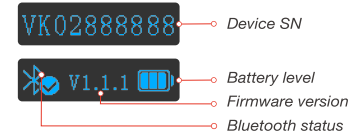


### Overview

#### Device description



— 02 —



[Start]: press and hold the power button for 1 second  
 [Shut down]: press and hold the power button for 4 seconds

— 03 —



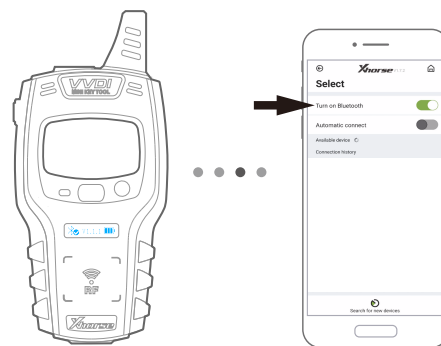
[Transponder detection]: press the power button for 1 second  
 [Frequency test]: press and hold the power button for 2 seconds

— 04 —



1. Enter the main interface of APP and click "add device" to connect

— 05 —



2. The bluetooth of the cellphone is required to be turned on

— 06 —



3. Click "search for new device" and pair the device according to SN

— 07 —



After connection success, read vehicle immo transponder detailed information

Press any buttons of vehicle remote close to 'remote identification area', vehicle remote mode and type will be shown on APP

4. According to the operation, device related functions will be performed after connected to APP successfully

— 08 —